



Test Report

No. HLL13/1269/2441

Date: August 22, 2013

Page 1 of 6

CHI NHANH CONG TY TNHH SAN XUAT THUONG MAI HA PHONG -XUONG SAN XUAT

LO LA2, DUONG SO 1, KCN XUYEN A, MY HANH BAC, DUC HOA, LONG AN.
VIET NAM

The following sample(s) was/were submitted and identified by/on behalf of the client as:

Sample description : AIR CUSHION AB210

Characteristic : DIAMETER BUBBLES 10mm,
ONE LAYER OF BUBBLES AND SINGLE FILM

Sample Receiving Date : AUGUST 13, 2013

Testing Period : AUGUST 13 to AUGUST 22, 2013

Test Requested : AS APPLICANT'S REQUIREMENTS

Test Result(s) : Please refer to next page(s)

Signed for and on behalf of
SGS Vietnam Ltd



Tran Thi Lien
Hardline and E&E Lab Manager

This document is issued by the Company subject to its General Conditions of Service printed overleaf or available on request and accessible at http://www.sgs.com/terms_and_conditions.htm. Attention is drawn to the limitation of liability, indemnification and jurisdiction issues defined therein. Any holder of this document is advised that information contained hereon reflects the Company's findings at the time of its intervention only and within the limits of Client's instructions, if any. The Company's sole responsibility is to its Client and this document does not exonerate parties to a transaction from exercising all their rights and obligations under the transaction documents. Any unauthorized alteration, forgery or falsification of the content or appearance of this document is unlawful and offenders may be prosecuted to the fullest extent of the law.

Unless otherwise stated the results shown in this test report refer only to the sample(s) tested and such sample(s) are retained for 30 days only. This document cannot be reproduced except in full, without prior approval of the company

Test result(s):

Test Part Description: No.1: Air cushion

1. RoHS Test :

Test result by chemical method (Unit: mg/kg)

Test Item(s)	Method	MDL	Result	RoHS Limit
			No.1	
Cadmium (Cd) (*)	With reference to IEC 62321:2008. Analysis was performed by ICP-OES.	2	n.d.	100
Lead (Pb) (*)	With reference to IEC 62321:2008. Analysis was performed by ICP-OES.	2	n.d.	1000
Mercury (Hg) (*)	With reference to IEC 62321:2008. Analysis was performed by ICP-OES.	2	n.d.	1000
Hexavalent Chromium (CrVI) (*)	With reference to IEC 62321:2008. Analysis was performed by UV-Vis Spectrometry.	2	n.d.	1000
Sum of PBBs (*)	With reference to IEC 62321:2008. Determination of PBB and PBDE by GC/MS.	-	n.d.	1000
Monobromobiphenyl		5	n.d.	-
Dibromobiphenyl		5	n.d.	-
Tribromobiphenyl		5	n.d.	-
Tetrabromobiphenyl		5	n.d.	-
Pentabromobiphenyl		5	n.d.	-
Hexabromobiphenyl		5	n.d.	-
Heptabromobiphenyl		5	n.d.	-
Octabromobiphenyl		5	n.d.	-
Nonabromobiphenyl		5	n.d.	-
Decabromobiphenyl		5	n.d.	-
Sum of PBDEs (*)		-	n.d.	1000
Monobromodiphenyl ether		5	n.d.	-
Dibromodiphenyl ether		5	n.d.	-
Tribromodiphenyl ether		5	n.d.	-
Tetrabromodiphenyl ether		5	n.d.	-
Pentabromodiphenyl ether		5	n.d.	-
Hexabromodiphenyl ether		5	n.d.	-
Heptabromodiphenyl ether		5	n.d.	-
Octabromodiphenyl ether		5	n.d.	-
Nonabromodiphenyl ether		5	n.d.	-
Decabromodiphenyl ether		5	n.d.	-

Note: mg/kg = ppm; 0.1wt% = 1000ppm

MDL = Method Detection Limit

n.d. = Not detected

“-“ = Not Regulated

(*) This / these test(s) was / were accredited ISO 17025:2005 by VILAS

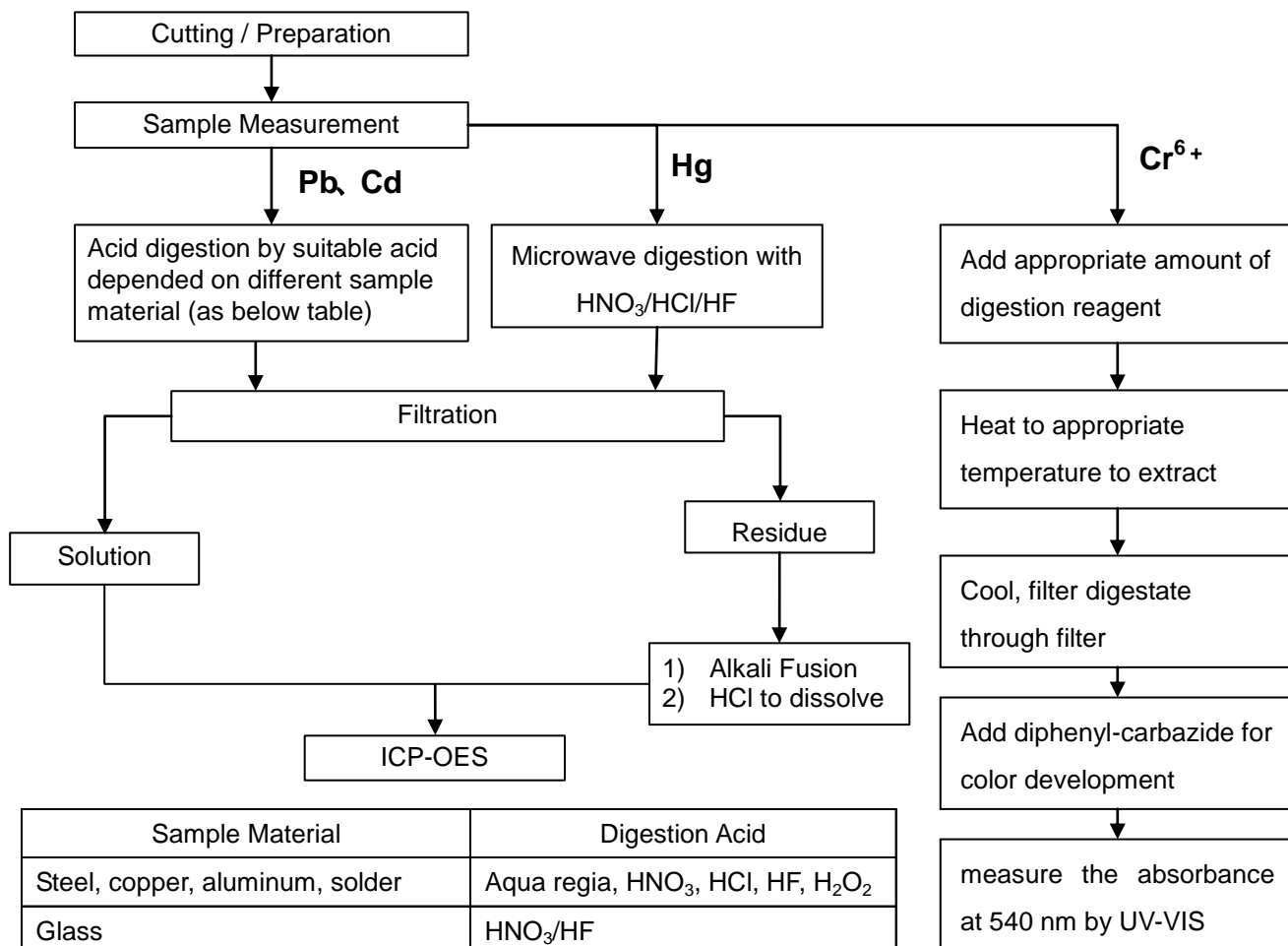
This / these test(s) was / were performed by SGS VN's chemical lab

This document is issued by the Company subject to its General Conditions of Service printed overleaf or available on request and accessible at http://www.sgs.com/terms_and_conditions.htm. Attention is drawn to the limitation of liability, indemnification and jurisdiction issues defined therein. Any holder of this document is advised that information contained hereon reflects the Company's findings at the time of its intervention only and within the limits of Client's instructions, if any. The Company's sole responsibility is to its Client and this document does not exonerate parties to a transaction from exercising all their rights and obligations under the transaction documents. Any unauthorized alteration, forgery or falsification of the content or appearance of this document is unlawful and offenders may be prosecuted to the fullest extent of the law.

Unless otherwise stated the results shown in this test report refer only to the sample(s) tested and such sample(s) are retained for 30 days only. This document cannot be reproduced except in full, without prior approval of the company

Flow Chart for RoHS: Pb/Cd/Hg/Cr⁶⁺ Testing

- 1) The samples were dissolved totally by pre-conditioning method according to below flow chart. (Cr⁶⁺ test method excluded)
- 2) Operator: Mr. Tho, Ms. Ly
- 3) Section Chief: Mr. Hai



Sample Material	Digestion Acid
Steel, copper, aluminum, solder	Aqua regia, HNO ₃ , HCl, HF, H ₂ O ₂
Glass	HNO ₃ /HF
Gold, platinum, palladium, ceramic	Aqua regia
Silver	HNO ₃
Plastic	H ₂ SO ₄ , H ₂ O ₂ , HNO ₃ , HCl
Others	Any acid to total digestion

This document is issued by the Company subject to its General Conditions of Service printed overleaf or available on request and accessible at http://www.sgs.com/terms_and_conditions.htm. Attention is drawn to the limitation of liability, indemnification and jurisdiction issues defined therein. Any holder of this document is advised that information contained herein reflects the Company's findings at the time of its intervention only and within the limits of Client's instructions, if any. The Company's sole responsibility is to its Client and this document does not exonerate parties to a transaction from exercising all their rights and obligations under the transaction documents. Any unauthorized alteration, forgery or falsification of the content or appearance of this document is unlawful and offenders may be prosecuted to the fullest extent of the law.

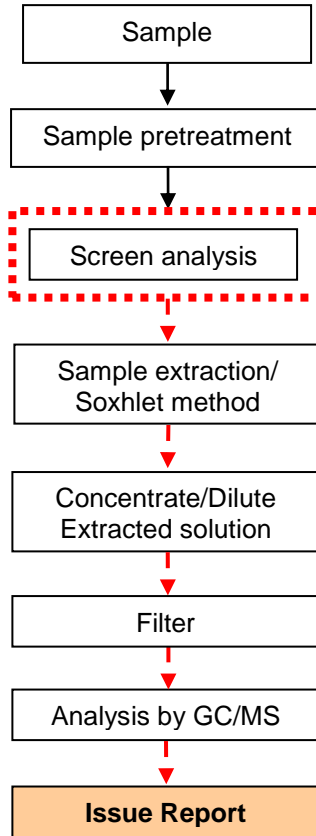
Unless otherwise stated the results shown in this test report refer only to the sample(s) tested and such sample(s) are retained for 30 days only. This document cannot be reproduced except in full, without prior approval of the company



PBB/PBDE analytical FLOW CHART

- 1) Name of the person who made measurement: Mr. Quoc
- 2) Name of the person in charge of measurement: Mr. Hai

First testing process →
Optional screen process - - - - -
Confirmation process - · - · - -



This document is issued by the Company subject to its General Conditions of Service printed overleaf or available on request and accessible at http://www.sgs.com/terms_and_conditions.htm. Attention is drawn to the limitation of liability, indemnification and jurisdiction issues defined therein. Any holder of this document is advised that information contained hereon reflects the Company's findings at the time of its intervention only and within the limits of Client's instructions, if any. The Company's sole responsibility is to its Client and this document does not exonerate parties to a transaction from exercising all their rights and obligations under the transaction documents. Any unauthorized alteration, forgery or falsification of the content or appearance of this document is unlawful and offenders may be prosecuted to the fullest extent of the law.

Unless otherwise stated the results shown in this test report refer only to the sample(s) tested and such sample(s) are retained for 30 days only. This document cannot be reproduced except in full, without prior approval of the company

2. Dimethyl Fumarate

Test Method: In-house method – solvent extraction. Analysis was conducted by GC/MS

Compounds	CAS No.	Result (mg/kg)	MDL(mg/kg)
Dimethyl fumarate	624-49-7	n.d.	0.1
Conclusion	--	PASS	

Note: n.d. = not detected
 Method Detection Limit = 0.1 mg/kg
 Recommended Max limit = 0.1 mg/kg
 Recommended Max limit is with reference to Commission Decision 2011/135/EU (previously restricted under 2010/153/EU and 2009/251/EC)

Remark: The selected component is tested as per client’s requested.

3. Antimony, Arsenic content

Test Item(s)	Unit	Method	Result No.1	MDL
Antimony (Sb)	mg/kg	With reference to US EPA 3052:1996. Analysis was performed by ICP-OES.	n.d.	20
Arsenic content (As)	mg/kg	With reference to US EPA 3052:1996. Analysis was performed by ICP-OES.	n.d.	20

Note : mg/kg = ppm
 n.d. = not detected
 MDL = Method Detection Limit
 The tests were performed by SGS Vietnam’s Chemical Lab

This document is issued by the Company subject to its General Conditions of Service printed overleaf or available on request and accessible at http://www.sgs.com/terms_and_conditions.htm. Attention is drawn to the limitation of liability, indemnification and jurisdiction issues defined therein. Any holder of this document is advised that information contained hereon reflects the Company’s findings at the time of its intervention only and within the limits of Client’s instructions, if any. The Company’s sole responsibility is to its Client and this document does not exonerate parties to a transaction from exercising all their rights and obligations under the transaction documents. Any unauthorized alteration, forgery or falsification of the content or appearance of this document is unlawful and offenders may be prosecuted to the fullest extent of the law.

Unless otherwise stated the results shown in this test report refer only to the sample(s) tested and such sample(s) are retained for 30 days only. This document cannot be reproduced except in full, without prior approval of the company

Sample photo



SGS authenticate the photo on original report only
*****End of Report*****

This document is issued by the Company subject to its General Conditions of Service printed overleaf or available on request and accessible at http://www.sgs.com/terms_and_conditions.htm. Attention is drawn to the limitation of liability, indemnification and jurisdiction issues defined therein. Any holder of this document is advised that information contained hereon reflects the Company's findings at the time of its intervention only and within the limits of Client's instructions, if any. The Company's sole responsibility is to its Client and this document does not exonerate parties to a transaction from exercising all their rights and obligations under the transaction documents. Any unauthorized alteration, forgery or falsification of the content or appearance of this document is unlawful and offenders may be prosecuted to the fullest extent of the law.

Unless otherwise stated the results shown in this test report refer only to the sample(s) tested and such sample(s) are retained for 30 days only. This document cannot be reproduced except in full, without prior approval of the company